

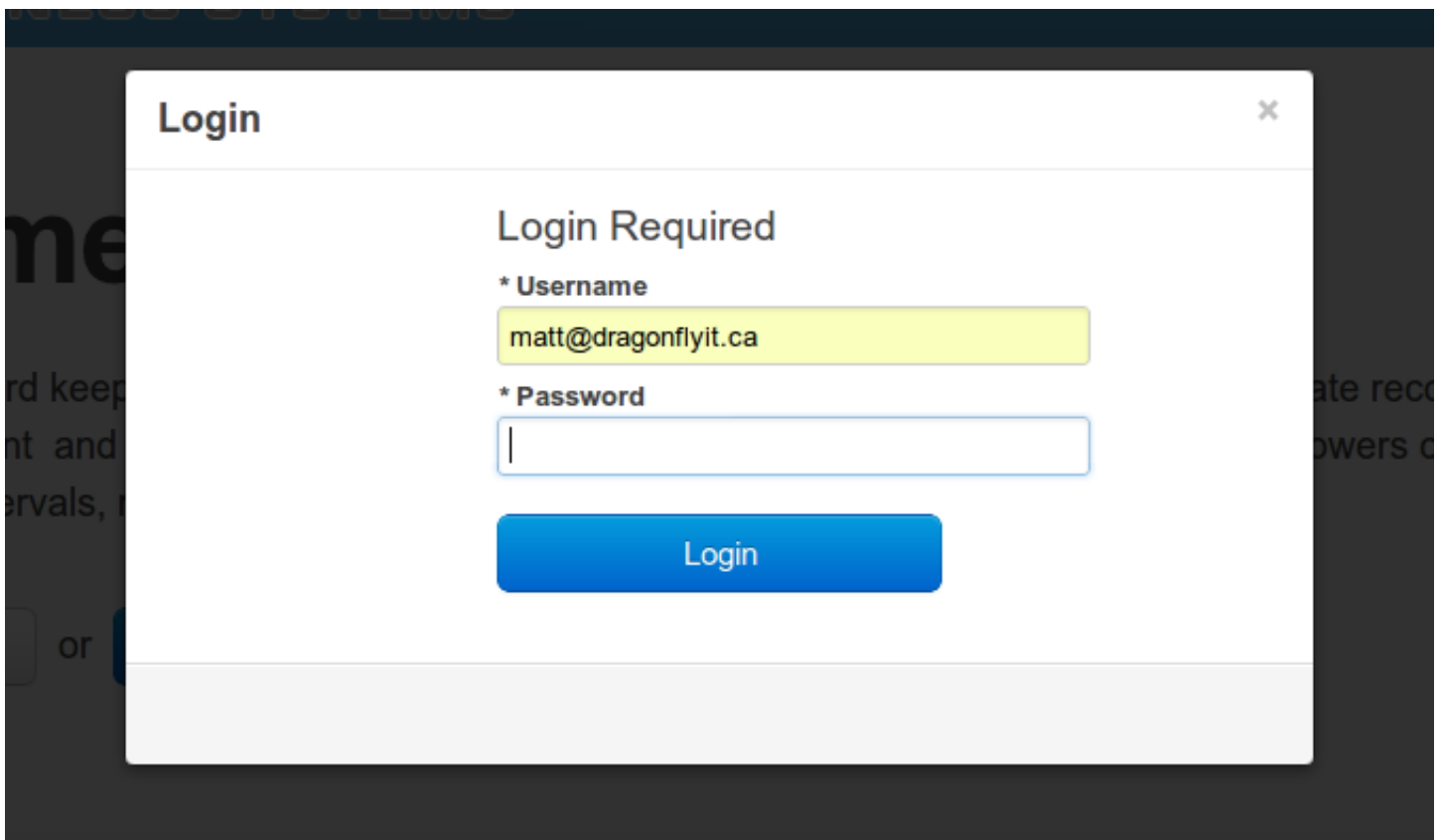
Apply Treatment as Spray Record

Your account comes loaded with many treatment recommendations from OMAFRA's Publications 360 and 75. Treatments include recommended chemicals and rates, as well as timings for pests and growth stages. Treatments can be applied as spray records in your account with very little data entry and in only a few minutes.

This article will show you step by step how to find an appropriate treatment and apply it as a spray to your records - a walkthrough video is also available here - [Help Video: Apply Treatment as Spray Record](#).

Login

First you'll need to login.

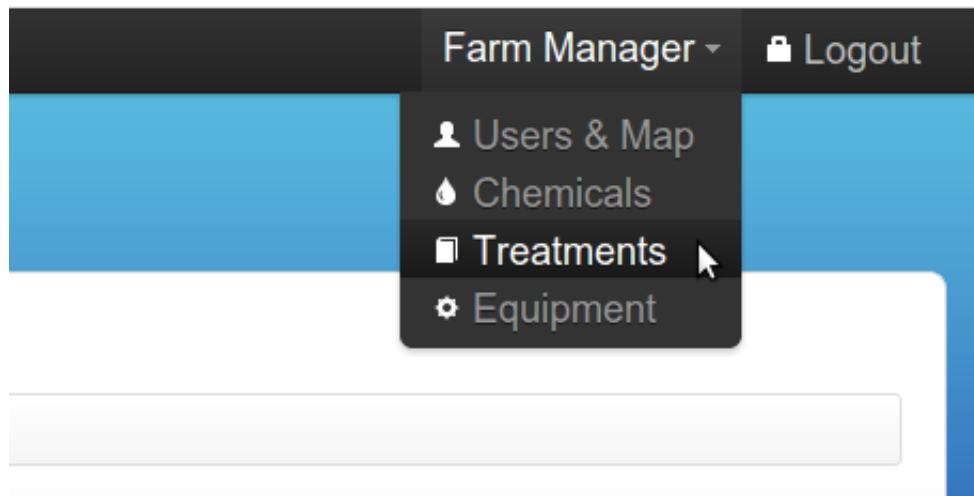


The image shows a screenshot of a web application's login interface. It features a white modal window with a dark background. The window has a title bar with the word "Login" on the left and a close button (an 'x' icon) on the right. Inside the window, the heading "Login Required" is centered. Below the heading, there are two input fields. The first is labeled "* Username" and contains the email address "matt@dragonflyit.ca". The second is labeled "* Password" and is currently empty. Below these fields is a blue button with the text "Login".

Click 'View Treatments'

Then click the Farm Manager menu in the top right corner of your screen, and select Treatments from the menu.

On the Treatment Templates page we will find a full listing of all the treatments available for my crops. The select boxes near the top of the screen help us to search for an appropriate treatment for our pest, disease, or weed and our growth stage.



Select Target Pest/Weed/Disease and Growth Stage

The treatment list at the bottom of the screen will refresh automatically as I make my selections with the input boxes at the top. I'll select Black Rot as my disease - and then Two to three leaves unfolded as my Growth Stage.

Treatments

Crop HELP

Grapes ▼

Chemical HELP

Acramite 50 WS
Agri-Mek 1.9 % EC
Assail 70 WP
Copper Spray
Dikar

Pest/Disease/Weed HELP

Anthracnose
Black rot
Botrytis bunch rot
Brown Marmorated Stink Bug
Climbing cutworm

Growth Stage HELP

02 Bud swelling: buds expand ins
03 Wool (doeskin stage): brownis
07 First leaf unfolded and spread
05 Bud burst: green shoot first cl
09 Two to three leaves unfolded

Clear Search

Add New Treatment

These are common treatments for reference only and may be used to populate a spray record. They are not actually sprayed. Consult the latest product label before using a pesticide.

Found 2 Treatment(s)

Treatment name	Chemical(s)	Pests	Gro

Click 'Apply' Next to the Appropriate Treatment

In my case this will narrow down my treatment template choices to 2.
Click apply next to your chosen treatment template.

	Growth Stages	Actions
ack rot	<ul style="list-style-type: none">• 31 Berries pea-sized: bunches hang• 27 Fruit set: young fruits begin to swell• remains of flowers lost• 21 Early flowering: 25% of caps fallen• 19 Beginning of flowering: first caps falling• 17 Inflorescence fully developed: flowers separating• 15 Inflorescence elongating: flowers closely pressed together• 12 Five to six leaves unfolded: inflorescence clearly visible• 09 Two to three leaves unfolded	Apply or View
ack rot	<ul style="list-style-type: none">• 12 Five to six leaves unfolded: inflorescence clearly visible• 09 Two to three leaves unfolded• 07 First leaf unfolded and spread away from shoot• 05 Bud burst: green shoot first clearly visible	Apply or Edit

Enter Application Date

Now I will enter additional details about this treatment that will be added to my records.

Notice how the target disease and growth stage is already selected for me. The system has also set the appropriate tank mix for this treatment template.

Please record when & why you sprayed.

Spray Date Start HELP
05/17/2012

Spray Date End HELP

May 2012

Su	Mo	Tu	We	Th	Fr	Sa
		1	2	3	4	5
6	7	8	9	10	11	12
13	14	15	16	17	18	19
20	21	22	23	24	25	26
27	28	29	30	31		

m the system, it can set the chemicals

Enter Weather Information

Now I'll enter some weather information, and click next.

Brown Marmorated Stink Bug
Climbing cutworm

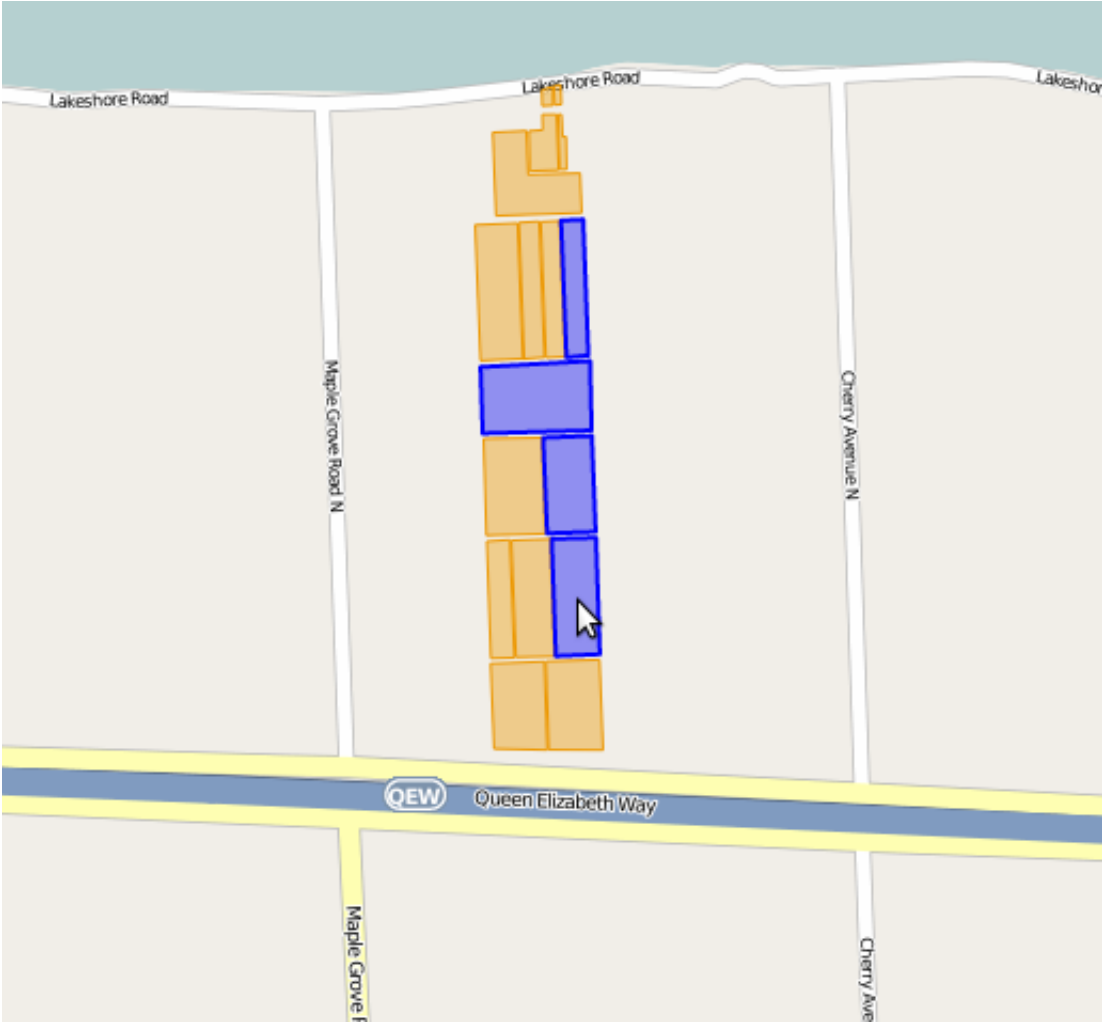
Temperature HELP
18 °C

Wind Direction HELP
N Light Air (2 - 3.2 km/hr) (1.25-2 mph)

Next

Select Treated Blocks

On this screen I'll click on the blocks where I've applied my treatment, and click next.



Confirm Tank Mix & Sprayer Output

Here I will double check that my tank mix has the correct chemicals, rates, and units.

1 When & Why → 2 Where → 3 What

Please record what was in your spray tank.
Please enter chemical rate amounts only, DO NOT INCLUDE WATER.

Trade Name <small>HELP</small>	Amount <small>HELP</small>	Rate (volume/area) <small>HELP</small>	
<input type="text" value="Nova 40 W"/>	<input type="text" value="200.000"/>	<input type="text" value="g"/>	<input type="text" value="hectar"/>

Now I will enter some information about my sprayer, including total output rate, calibration date, and sprayer method of application.

Please record the total sprayer output rate INCLUDING CHEMICALS AND WATER.

Pre-calibrated Sprayer HELP

Total Sprayer Output Rate HELP

Sprayer Calibration Date HELP

Method of Application HELP

Confirm PHI/REI

The system has calculated a PHI for me based on the spray date I entered earlier, and my tank mix. I'll click to be notified by email & text message to my cell phone when this date has passed.

Confirm that the calculated PHI date is correct if it is available for your tank mix, and click next.

Receive email alerts when the REI and/or PHI has passed.

Alert me when the REI has passed. [HELP](#)

Alert me when the PHI has passed. [HELP](#)

The Pre-Harvest Interval (PHI) calculated for your Grapes treatment is: 336 hour(s), or 14 day(s), or 31/May/2012

Confirm Treatment Amounts

On the final screen I will confirm the total amount of chemical that I used. In brackets is the calculated amount based on my rate and the areas I said I treated.

Please confirm the total amount(s) of each chemical used.

Trade Name <small>HELP</small>	Amount (calculated) <small>HELP</small>	Unit <small>HELP</small>
Nova 40 W	<input data-bbox="623 573 768 632" type="text" value="1100"/> (1136.36)	gram(s)

Enter Notes & Save.

Enter any comments or notes you have, and click save.

Please enter any comments or notes about the spray.

Comments (will appear on some reports.) [HELP](#)

These comments will go on my printed spray reports.

Notes (will not appear on any reports.) [HELP](#)

These notes will not show up on my printed reports.

[Back](#) [Save](#)

That's it. Our selected treatment template is now applied as a spray record.