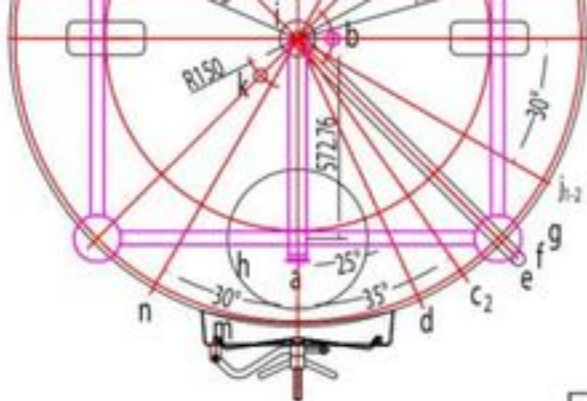


ATHERLITE

BT-03

K LIA

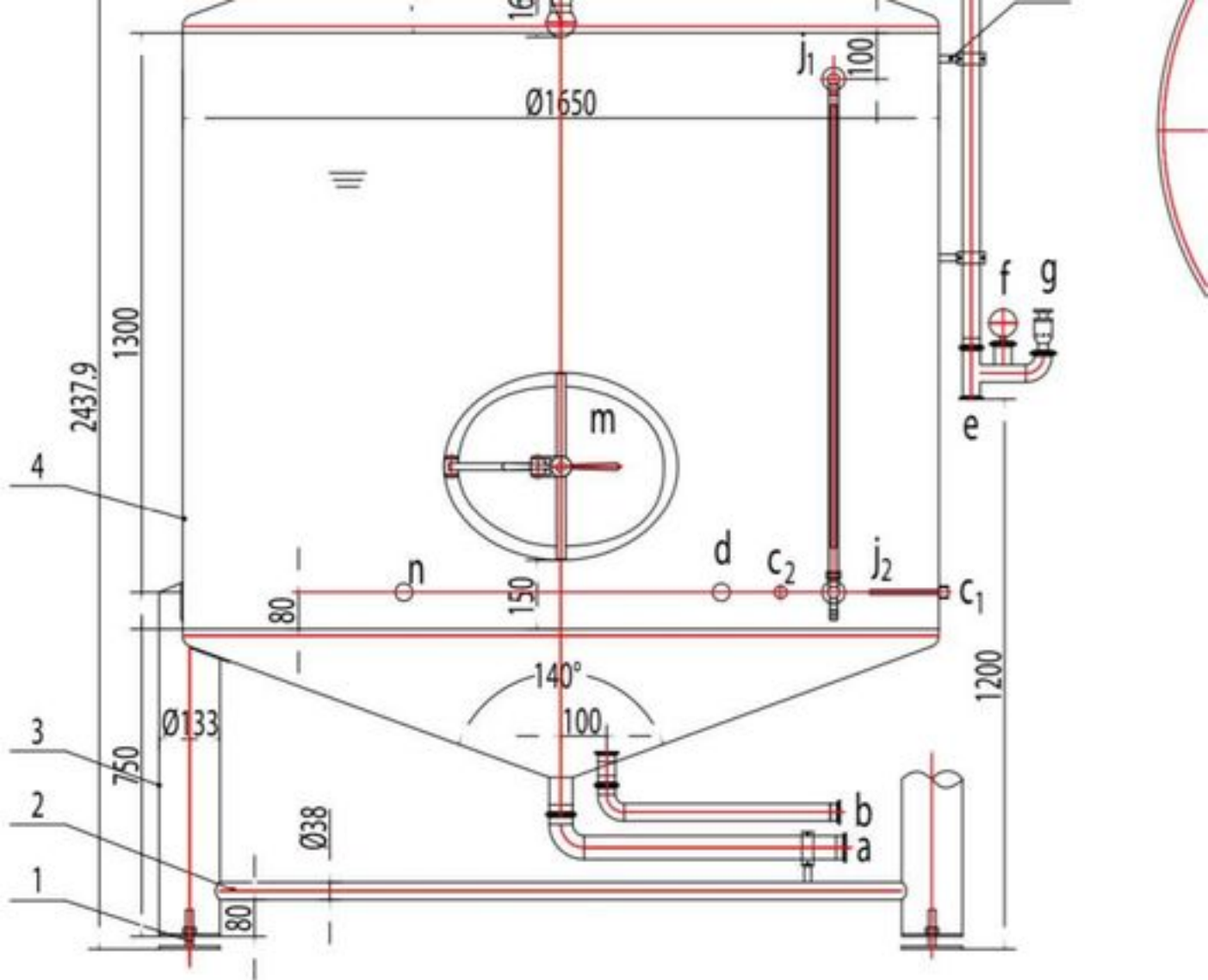




20BBL BBT

NO.	Size	Connecting style	Use
a	2" (Ø51)	Clamp	Drainage port
b	1.5" (Ø38)	Clamp	Beer outlet
C ₁₋₂	NPT1/2	Thread	Temperature thermowell
d	1.5" (Ø38)	Clamp	Carbon port
e	1.5" (Ø38)	Clamp	CIP inlet
f	1.5" (Ø38)	Clamp	Pressure gauge connection port
g	1.5" (Ø38)	Clamp	PRV connectoin port
h	DN400		Top manhole
i	Ø102	Clamp	CIP connection port
j ₁₋₂	1.5" (Ø38)	Clamp	Level gauge
k	1.5" (Ø38)	Clamp	Safety valve
m	530x430		Manhole door
n	1.5" (Ø38)	Clamp	Sampling valve

6	Pipe support	2			
5	360 Å rotating cleaning ball	1			
4	Cylinder t3				
3	Supporting leg Ø133x4	4			
2	Leg braced Ø38x1.5	1			
1	Adjusting bolt M27x80				



Production requirement

1. Effective volume: 20BBL, Gross volume: 25.7BBL;

2 Construction SUS 304L food grade stainless all pipes are sus304;